

Flexible schooling - meeting the needs of our students

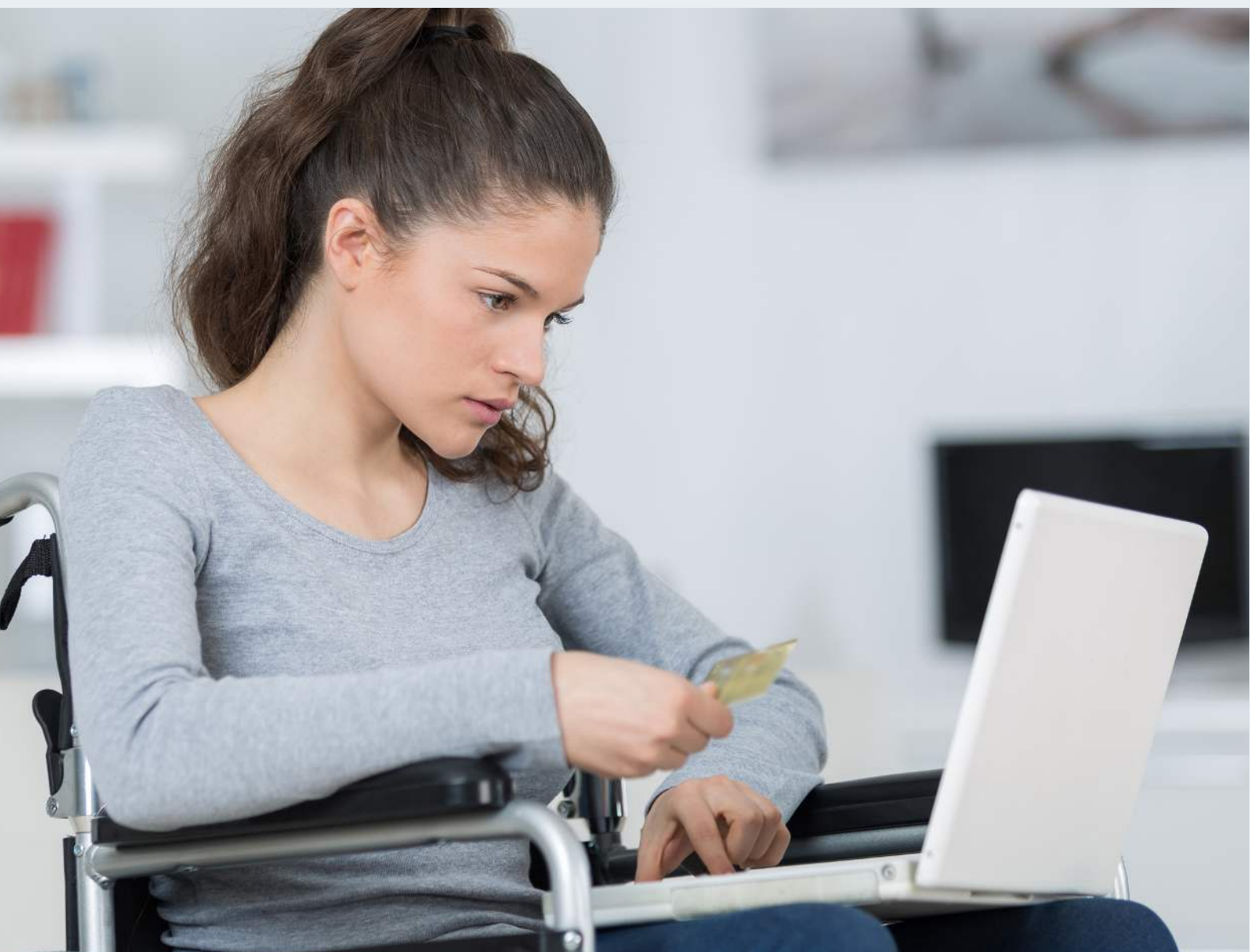
Local Education Authority or/and students with an EHCP



Who is NEC

At the National Extension College (NEC) we've been providing distance learning to help young people and adults open doors to their futures for over 60 years. Each year thousands of students access our high quality courses and expert tutor support to develop their knowledge and skills, and achieve their goals.

We work with a range of schools, local education authorities and education organisations.



Model of Learning

The student will receive:

- Access to the online self study course material
- Tutor marking/feedback and tutor support via the messaging system in the online platform
- 1 x 60 minute 121 online teaching per subject per week (term time) (optional/options)
- 1 x 30 minute 121 pastoral support every other week (term time)

For the first 3 weeks of the enrolment an induction is carried out with the Pastoral officer to support the student to engage with the platform and to develop a relationship which is supportive. During this time the student will have access to all the course material and will be working through the 'Getting Started' section on the learning platform.

Mentor/parent/guardian will receive:

- Access to the NEC Progress tracker
- Direct communication with the NEC pastoral officer to support the students progression
- Access to course guides which detail the course specification, the mode of assessment, learning hours, material and any additional text book requirements.
- Regular email updates regarding exams and assessment.

(Please Note- updates will only be sent once the mentor/guardian has logged on to the learning platform for the first time)

Students can enrol on the standard package, which is points 1, 2 and 4 above and add in other aspects of the service at a later date. However, we advise all students with additional learning needs to consider the full package as in our experience this offers the best chance for success.

Examinations

Please note, exam entry fees are separate. Once the student has joined the college we will discuss any access arrangements and quote separately to support these. If the students' examinations are being facilitated by a local school or the local authority we are able to work to ensure all requirements are met, for example subjects which have a none examined component (NEA).



Curriculum Choice

NEC has 16 IGCSE/GCSE courses. All core subjects are covered, as well as popular additional subject choices such as Spanish, Psychology and Astronomy. 21 AS/A Levels we have the widest range of subjects in our sector- and can offer expert tuition for all core subjects as well as exciting subject choices including Classical Civilisation And History of Art. Please visit our [website](http://www.nec.ac.uk) for the full list of courses on offer.

Tutor Support

NEC's delivery model is self-directed and self-paced learning. Many students find this flexibility is welcome. The student has a named subject specialist tutor who will communicate with the student via the online learning platform. The tutor is there to support the student with their studies and to mark the students work, providing valuable feedback.

All NEC's tutors are qualified teachers, many are examiners also. All have an enhanced DBS certificate. Tutors complete CPD with NEC focused on the range of students' needs and how to support these in an online environment.

Live Tuition

For some, occasional or regular support from a subject specialist tutor will enable them to reach their full potential. NEC facilitates live tuition in a safe, secure online environment.



Pastoral Support

We welcome and value all students and want to ensure all have the opportunity to achieve your goals.

NEC's delivery model is self-directed and self-paced learning. Many students find this flexibility is welcome. For some, occasional or regular support from a specialist tutor will enable them to reach their full potential. The list below details the types of support NEC can offer.

- Study Skills
- Personal Timetable creation
- Regular Monitoring of progress
- Meeting deadlines
- Exam preparation
- Support to access services for mental health support

"I can honestly say that as a student of NEC, joining them was the best decision of my life as students are not only given the chance to study at their own pace, but they're also able to receive as much support from the services offered to them." - Mohamed

Wellbeing For Learning Programme

NEC's Pastoral Officer has created a series of focused sessions throughout the year which provide students with the space to explore any barriers to learning they may have.

The sessions provide information and techniques regarding how to be a successful online distance learner.

The sessions are free of charge for NEC enrolled students.

- Live, engaging and supportive.
- Every other month.
- Topics include: Getting Started, Motivation and Procrastination, Revision and Anxiety.

Monitoring Progress

We know that it is important for you and parents/guardians to be able to monitor the student's progress to support attainment and engagement. The NEC Progress Tracker will provide you with an instant picture of your student's progression on their course(s) in terms of assignments submitted. It will also allow you to look a little deeper into the areas of their course(s) that they have accessed and worked through.

"NEC were incredibly responsive and knowledgeable and the only online provider who went the extra mile to check on potential exam clashes and practical endorsements. We did a lot of research and found NEC the most helpful, experienced and also not pushy at all. I can't recommend them enough – best company, service and content we have come across for a long time and true educators."